

Cascade Genetic Testing is one of the most important steps in breaking the cycle of hereditary cancer in families.

Cascade testing is the testing-sharing-testing-sharing of genetic information in families with a history of cancer. It can identify who is and who isn't at-risk for hereditary cancer among family members and help save lives.

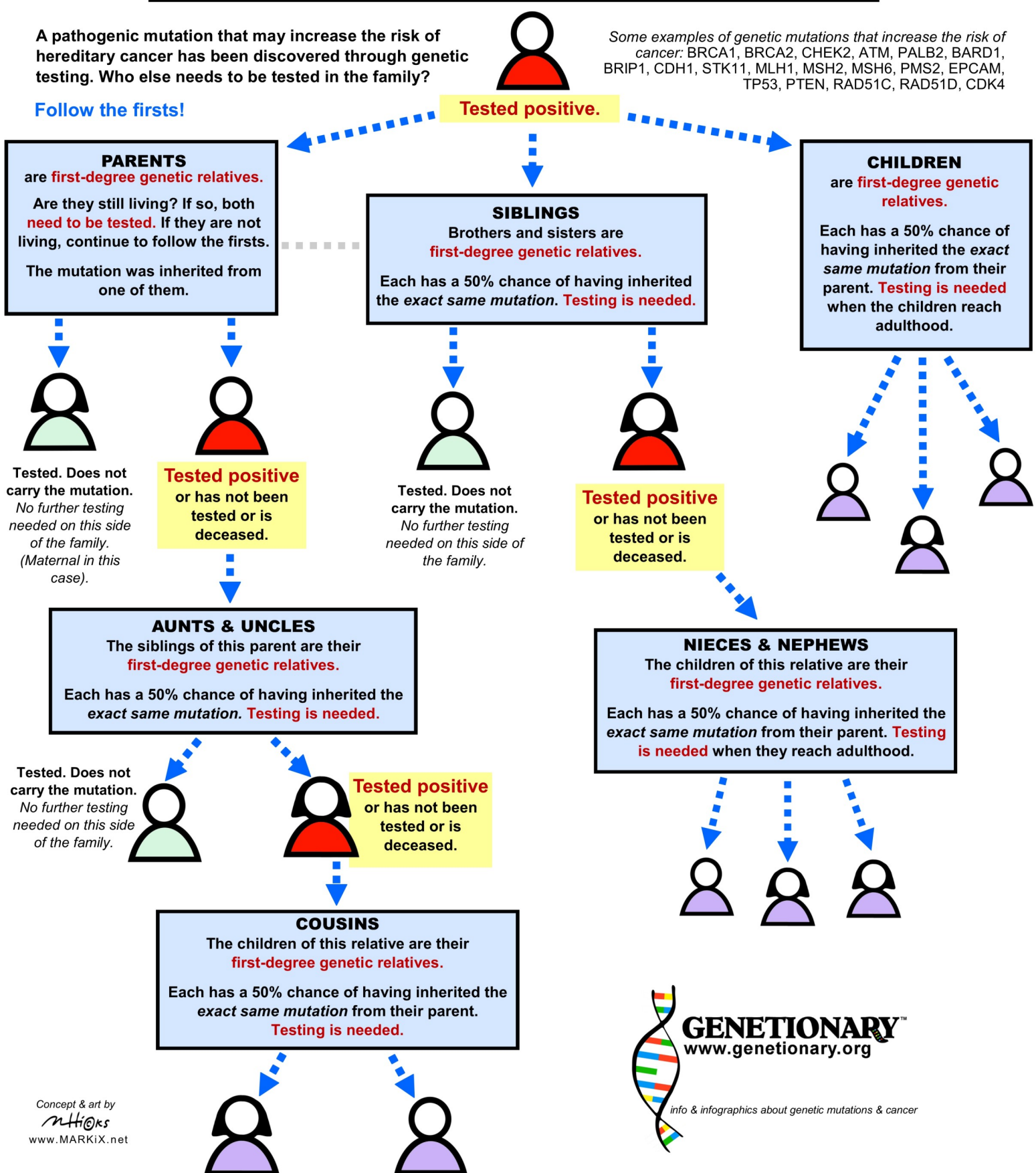
"Follow the Firsts" & Share Information

A pathogenic mutation that may increase the risk of hereditary cancer has been discovered through genetic testing. Who else needs to be tested in the family?



Some examples of genetic mutations that increase the risk of cancer: BRCA1, BRCA2, CHEK2, ATM, PALB2, BARD1, BRIP1, CDH1, STK11, MLH1, MSH2, MSH6, PMS2, EPCAM, TP53, PTEN, RAD51C, RAD51D, CDK4

Follow the firsts!



GENETIONARY™
www.genetionary.org

info & infographics about genetic mutations & cancer